

Axiom Lite™

Toegangscontrole

Installatie Handleiding

AxiomLite webclient v4.1

Uitgave mei 2015

Postbus 218
5150 AE Drunen

Thomas Edisonweg 5
5151 DH Drunen

HELPDESK :
0900-27274357

techhelp@aras.nl
www.aras.nl



Inhoudsopgave

1	Installatie eisen	3
2	Internet Information services inschakelen	5
2.1	Windows 7	5
2.2	Windows 8/8.1	7
2.3	Windows Server 2008/Windows Server 2008 R2	8
2.4	Windows Server 2012.....	13
3	Installatie webclient.....	24
4	Instellingen na installatie webclient	28
4.1	Windows 7 (64bit)	28
4.2	Windows 8/8.1	30
5	Inloggen via de Webclient	31
5.1	Taal selecteren	32

Inleiding

Geachte gebruiker,

De AxiomLite Web interface maakt het mogelijk om vanaf iedere werkplek in het netwerk het AxiomLite systeem te beheren. Dit kan doormiddel van een webbrowser, bijvoorbeeld: internet explorer. Dit houdt tevens in dat u geen installatie meer hoeft te doen op de desbetreffende werkplek. Binnen het netwerk dient wel 1 PC/server te zijn voorzien van Internet Information Service(IIS). Meestal is dit de AxiomLite Host/server.

Deze handleiding legt stap voor stap uit hoe de installatie procedure verloopt. Het is belangrijk dat deze procedure stap voor stap wordt gevolgd. Mochten er tijdens de installatie vragen zijn, bel dan met onze helpdesk. Deze is te bereiken op werkdagen van 08:30 tot 12:30 en van 13:00 tot 17:00 op 0900 27274357. Het is ook mogelijk dat een specialist van Aras Security BV de installatie uitvoert. Informeer bij uw installateur naar de mogelijkheden.

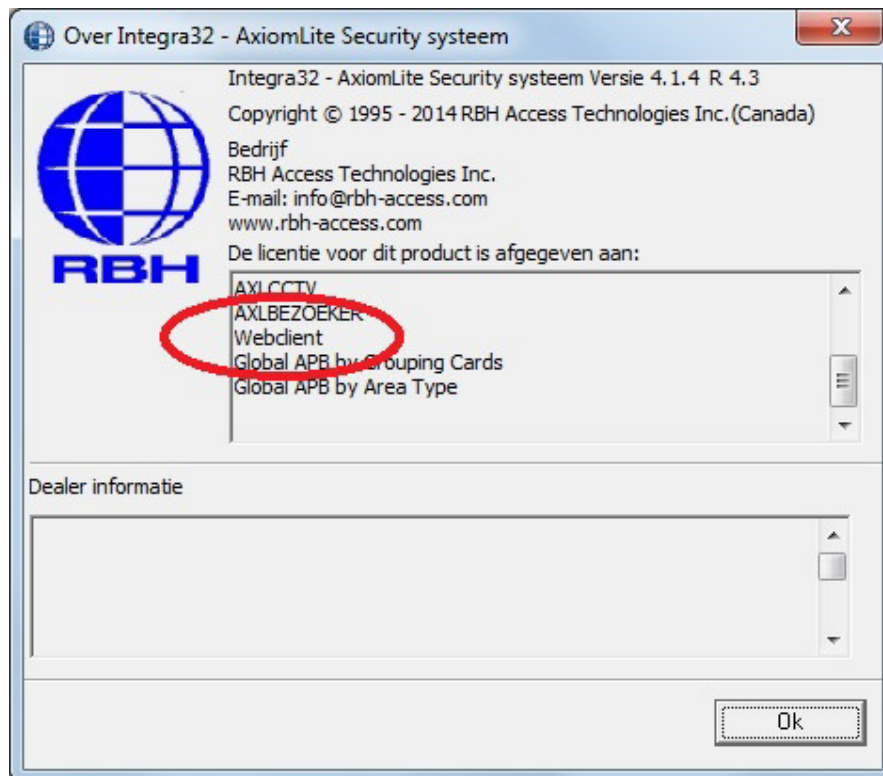
1 Installatie eisen

De onderstaande operating systemen worden ondersteund.

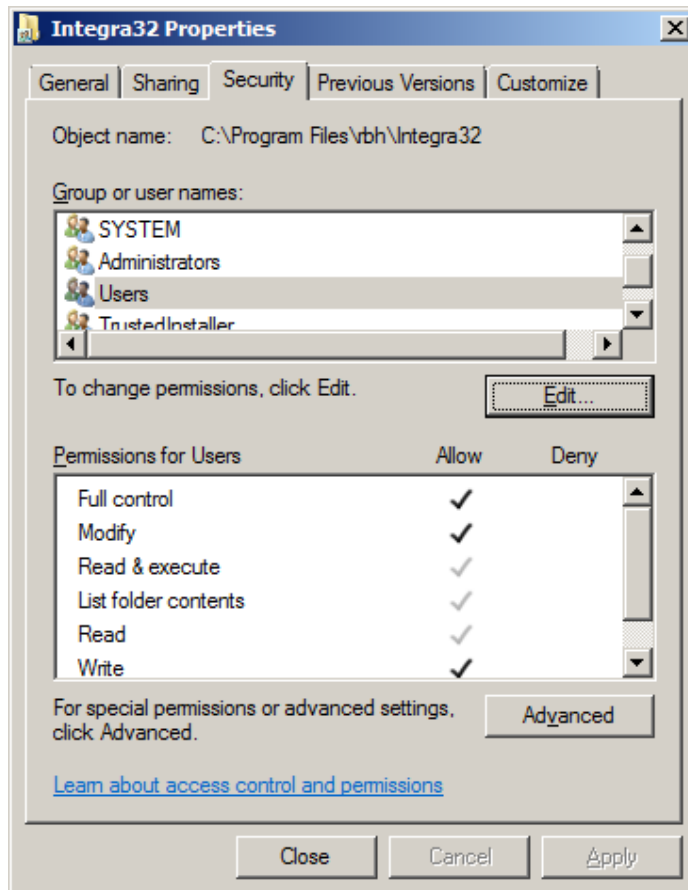
- Windows 7 Professional of Ultimate
- Windows 8/8.1
- Windows Server 2008 (IIS 7)
- Windows Server 2012

- AxiomLite v3.7.13 of hoger

- AxiomLite moet geregistreerd zijn voor de optie webclient.



- Deel de Integra32 map



- NET Framework 3.5 is benodigd. Bij het ontbreken van NET Framework 3.5, zal deze tijdens de Web Client installatie automatisch geïnstalleerd worden.

- Internet Information Services (IIS) is ook benodigd. De gebruiker krijgt een melding wanneer de IIS niet is geactiveerd.

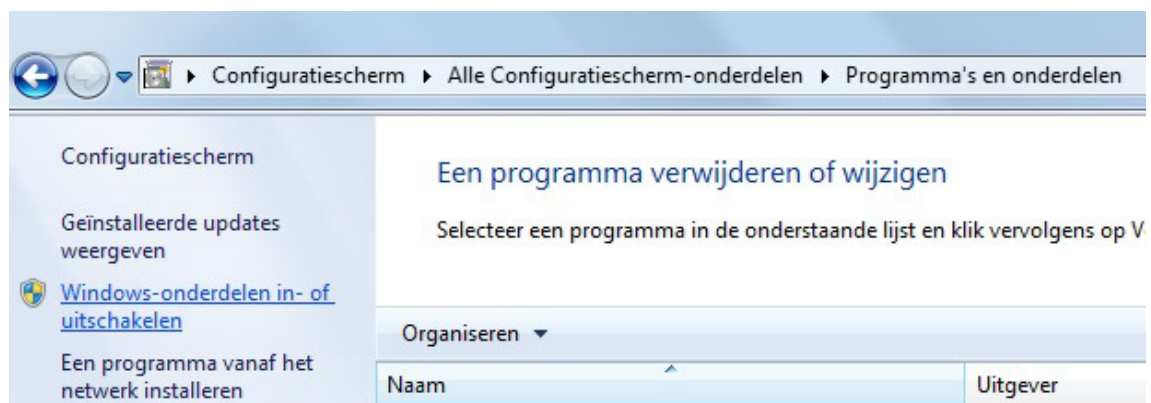
2 Internet Information services inschakelen

2.1 Windows 7

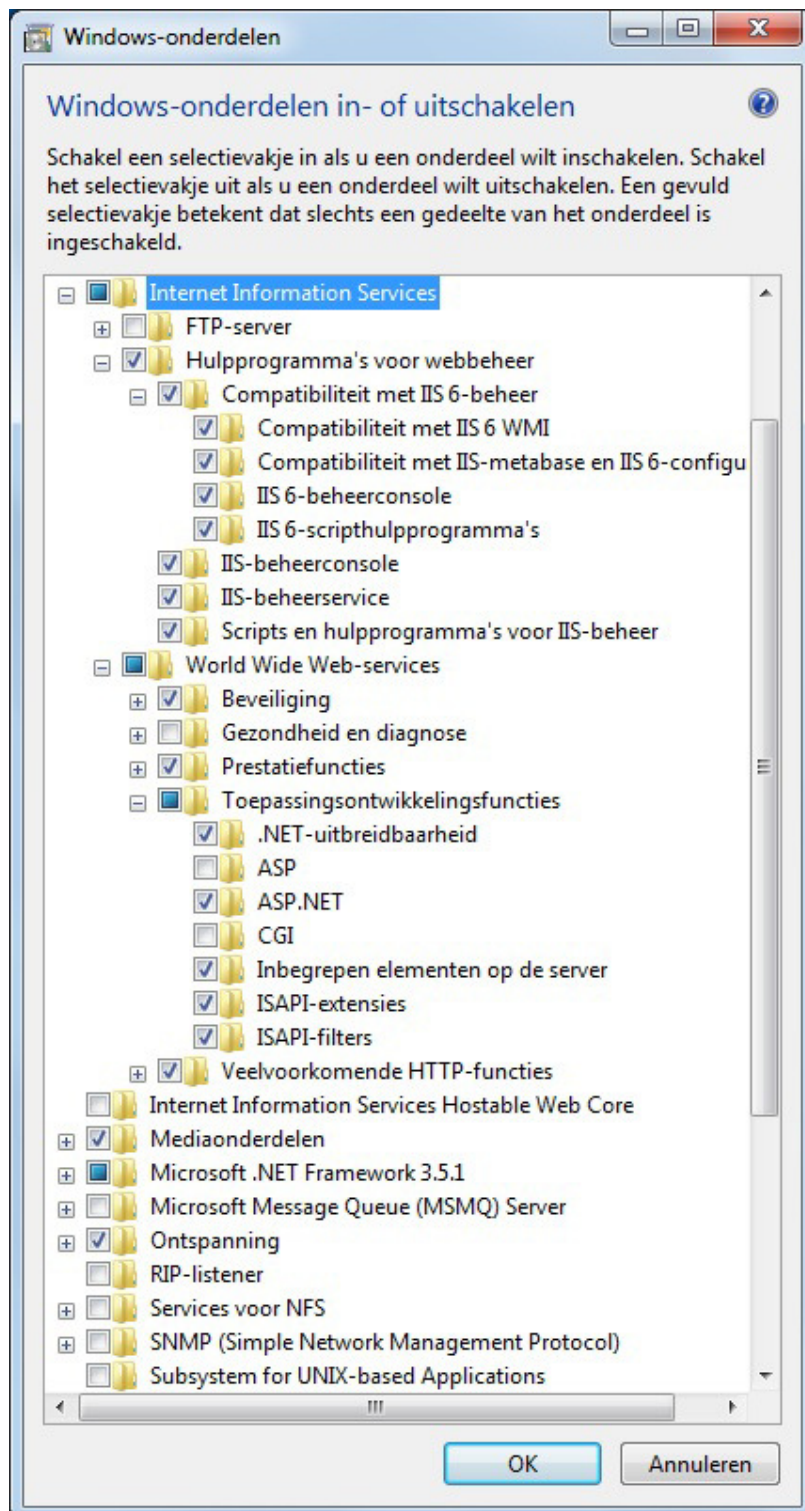
Ga naar 'Configuratiescherm' en selecteer 'Programma's en onderdelen'.



Selecteer 'Windows-onderdelen in- of uitschakelen'.

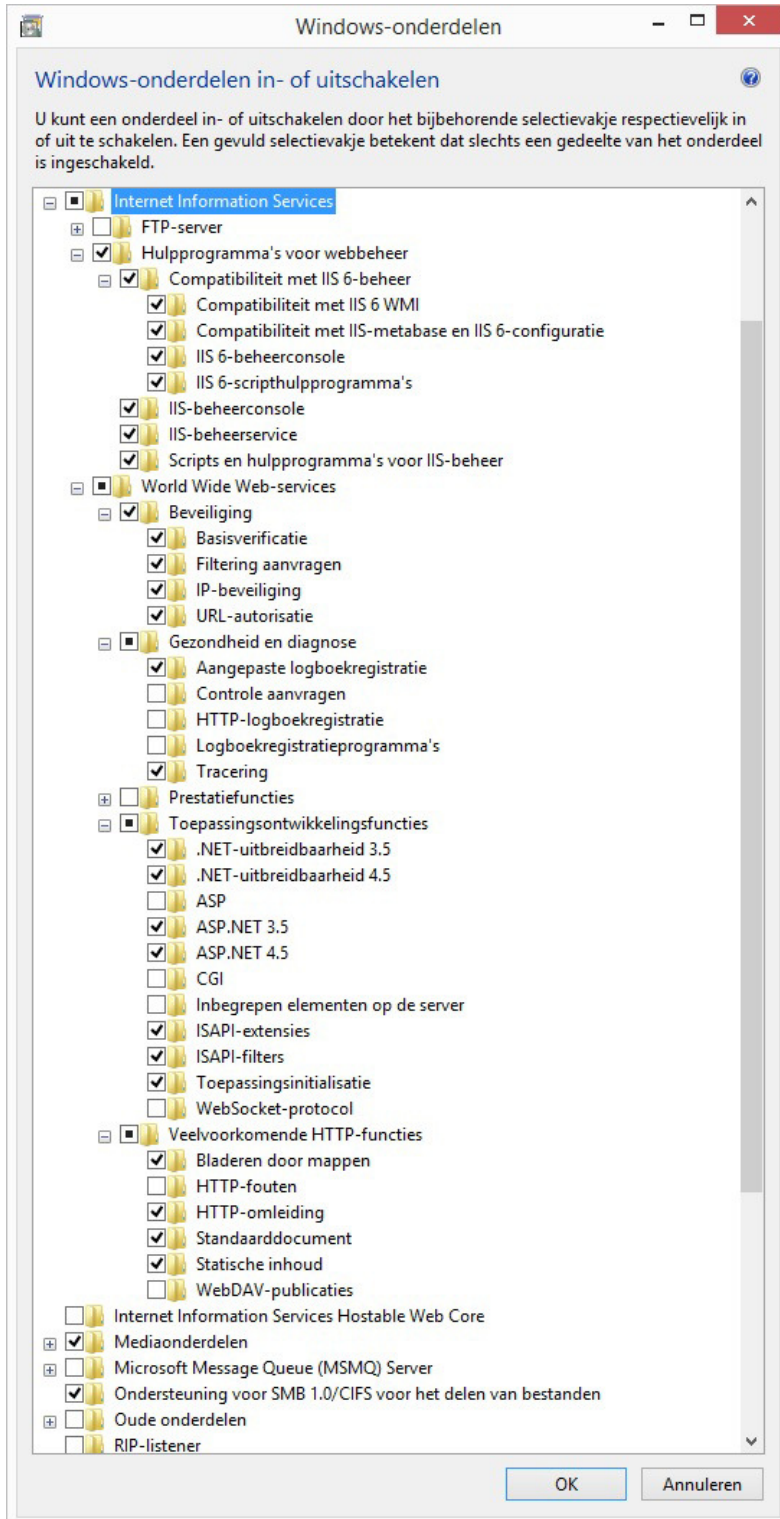


Selecteer de onderdelen voor "Internet Information Services" zoals aangegeven in onderstaand scherm.



2.2 Windows 8/8.1

De IIS setup voor windows 8/8.1 is hetzelfde als bij Windows 7 via 'Programma's en onderdelen' in het configuratiescherm.

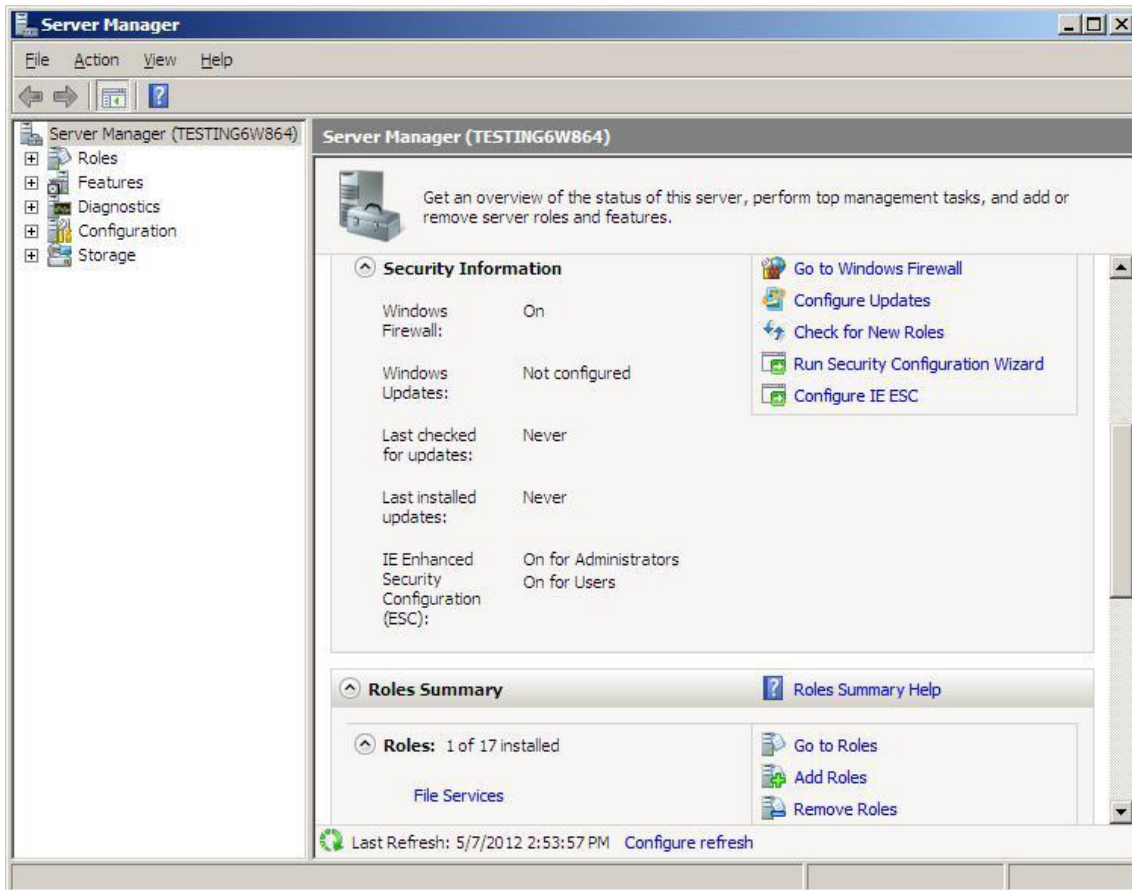


2.3 Windows Server 2008/Windows Server 2008 R2

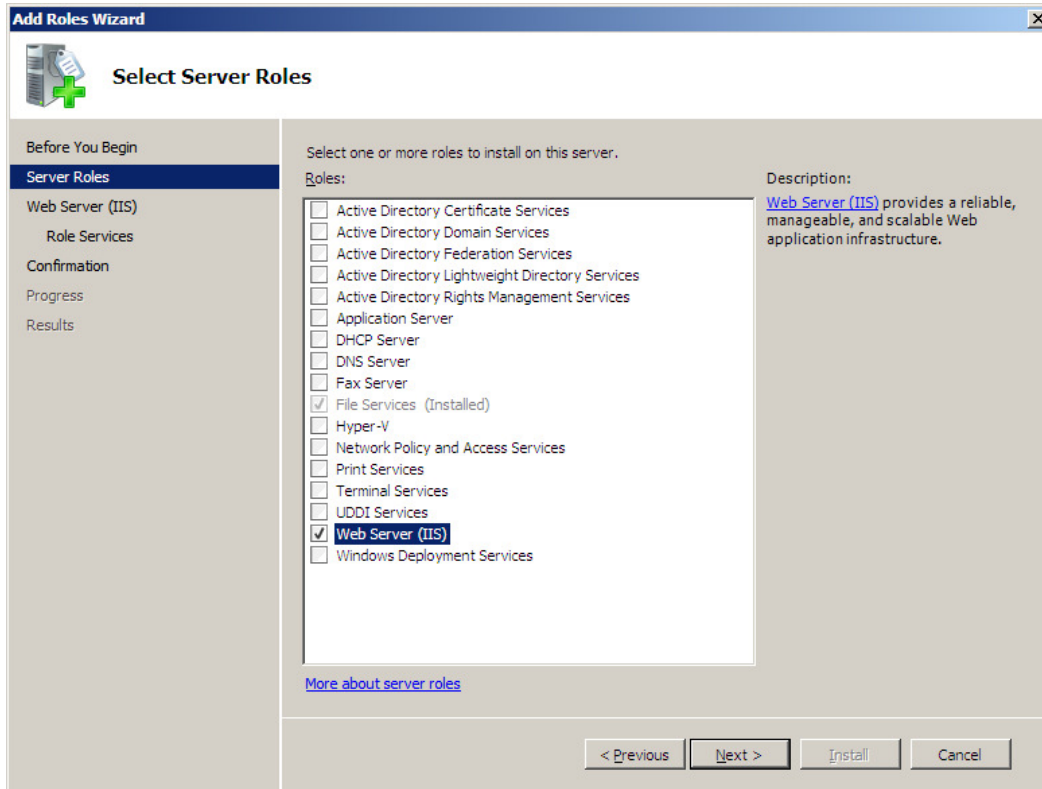
Zorg ervoor dat je beschikt over Administrator rechten op de server waarop IIS7 geïnstalleerd gaat worden. Mochten er niet genoeg rechten zijn dan zal onderstaand scherm verschijnen.



Click Start -> All Programs -> Administrative Tools -> Server Manager

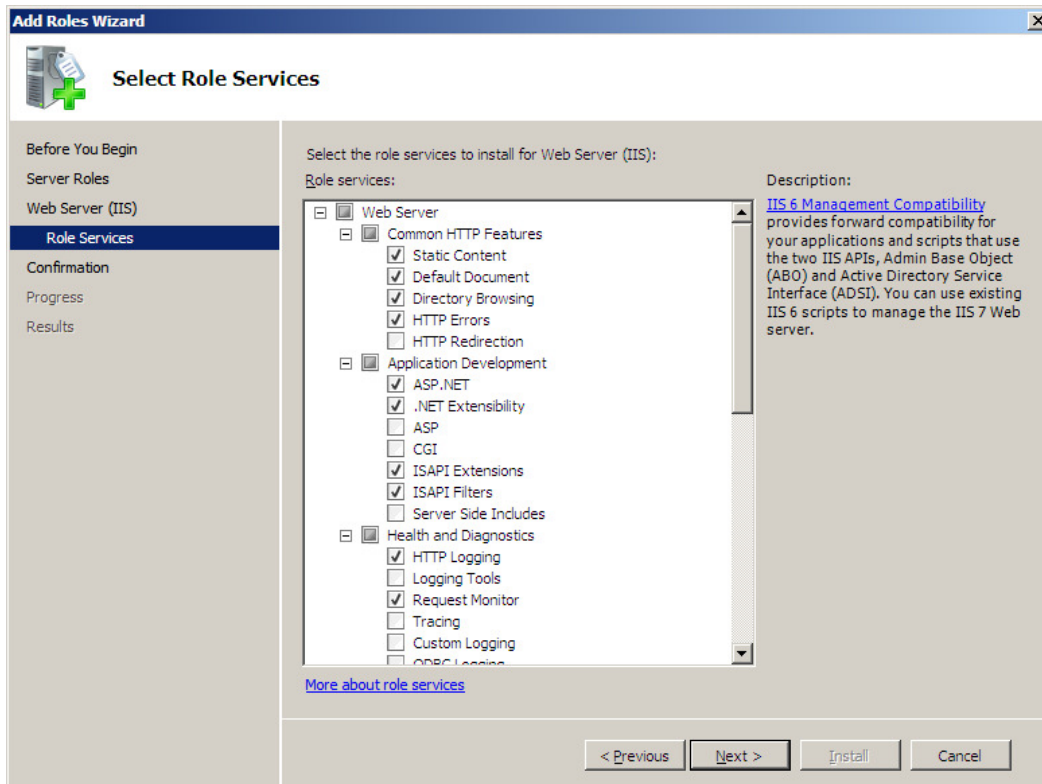


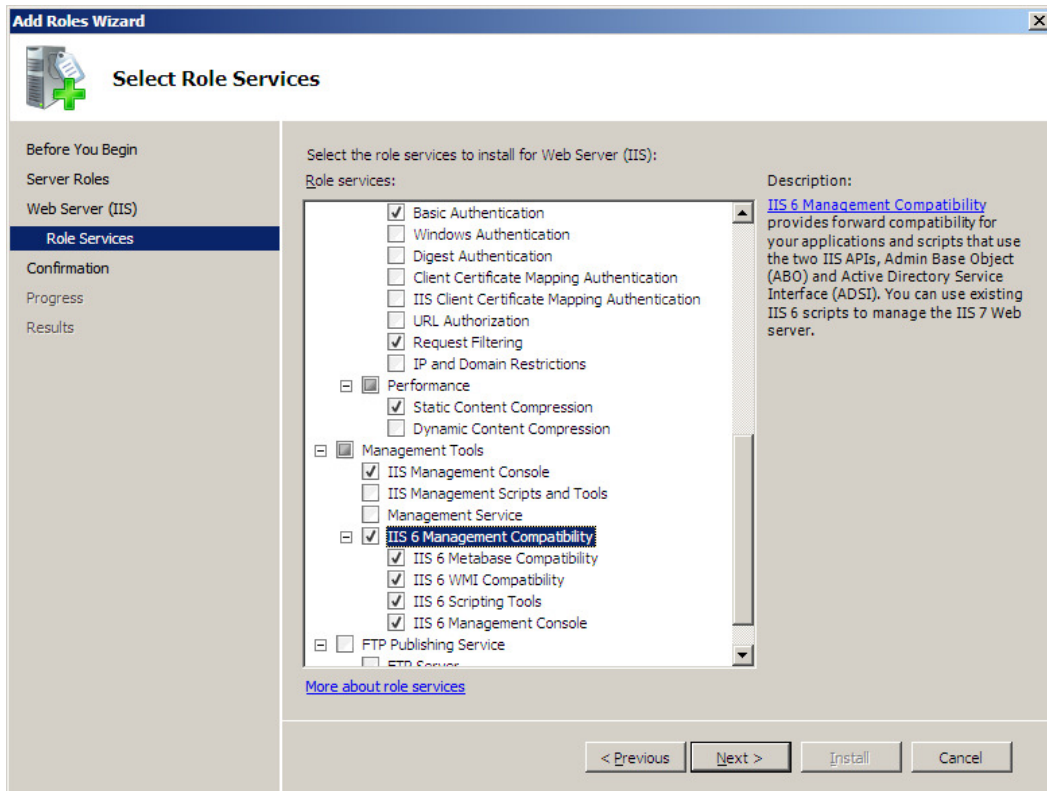
In het Server Manager scherm, ga naar 'Add Roles'.



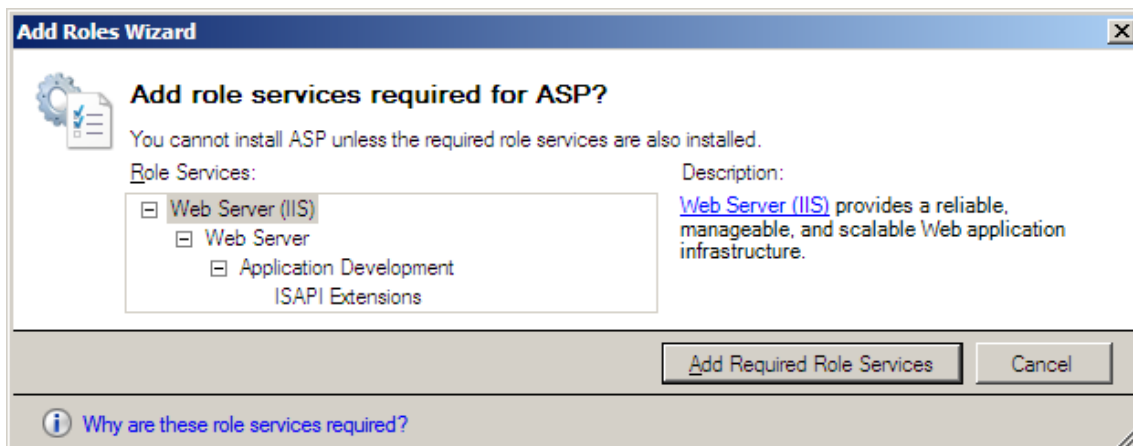
Selecteer de optie 'Web Server (IIS) en klik op 'Next'.

Selecteer de onderdelen zoals in onderstaand schema aangegeven.

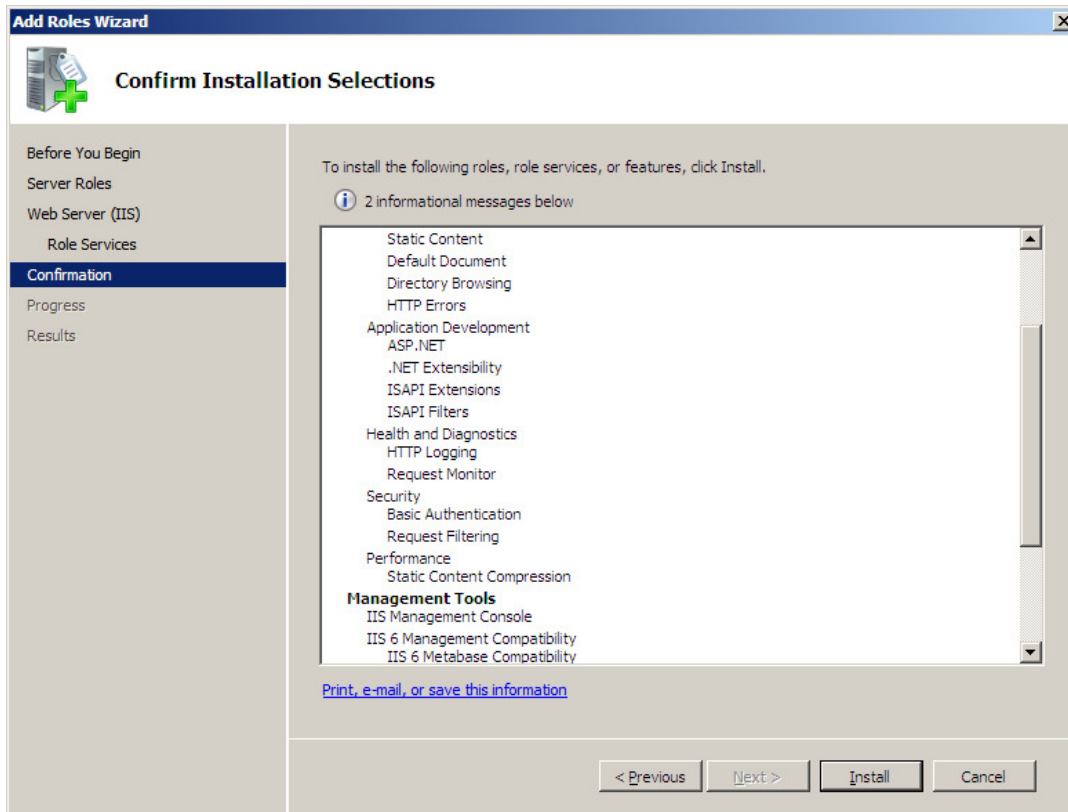




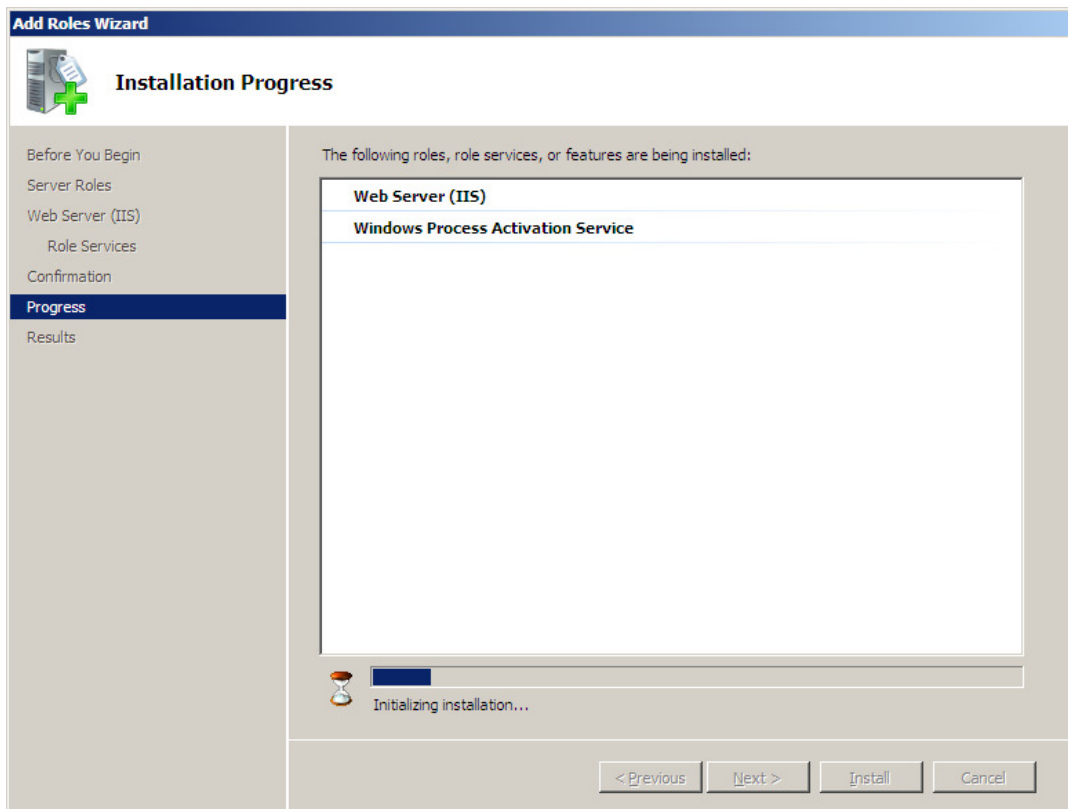
Klik op 'Next'.

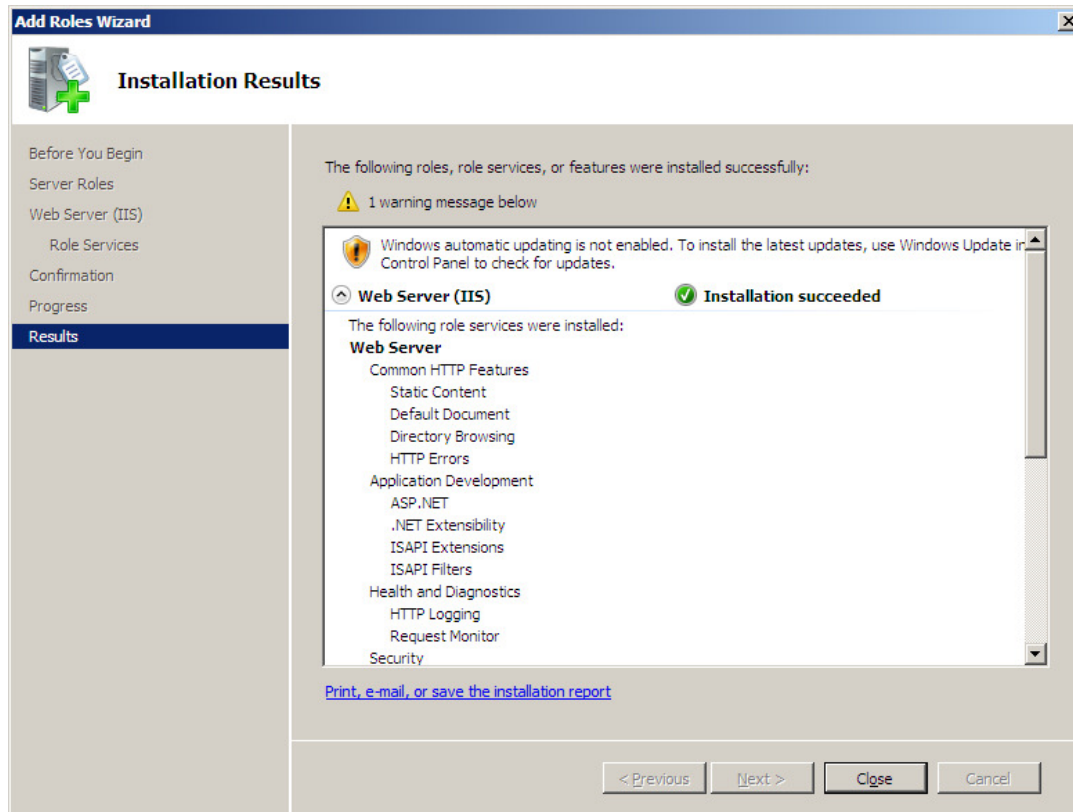


Klik op 'Add Required Role Service'.



Klik op 'Install' om de geselecteerde Role te installeren.





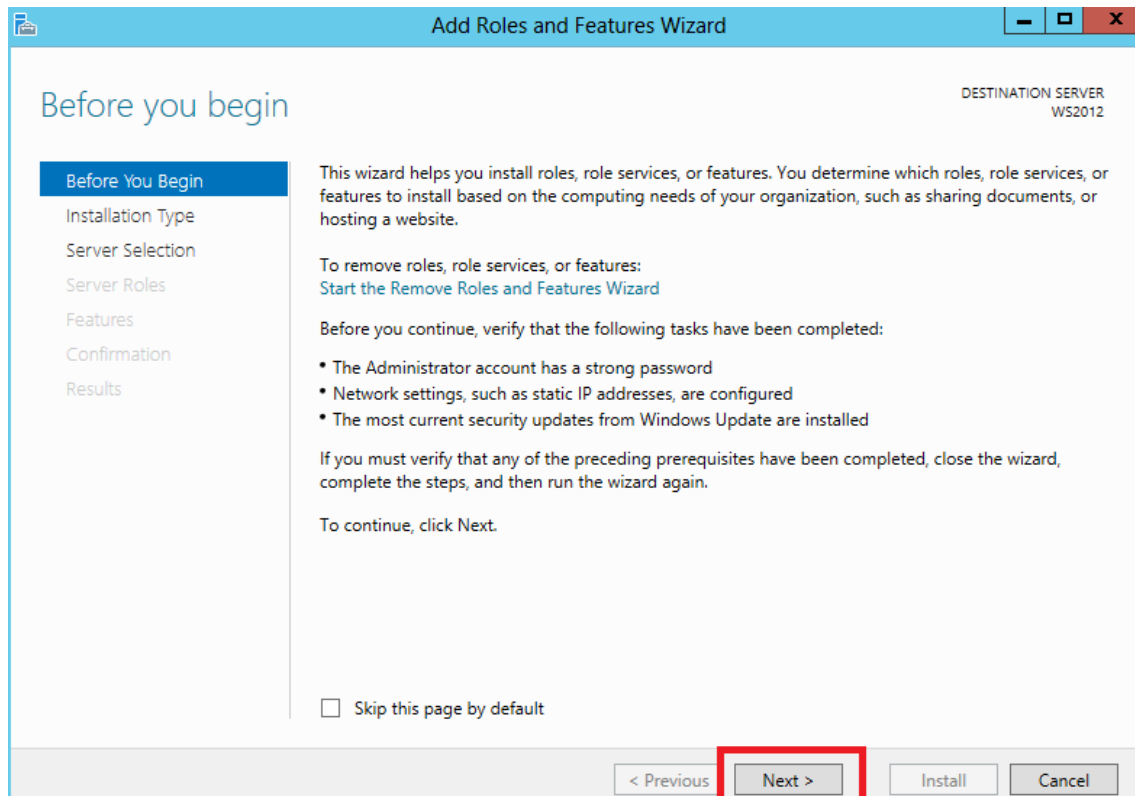
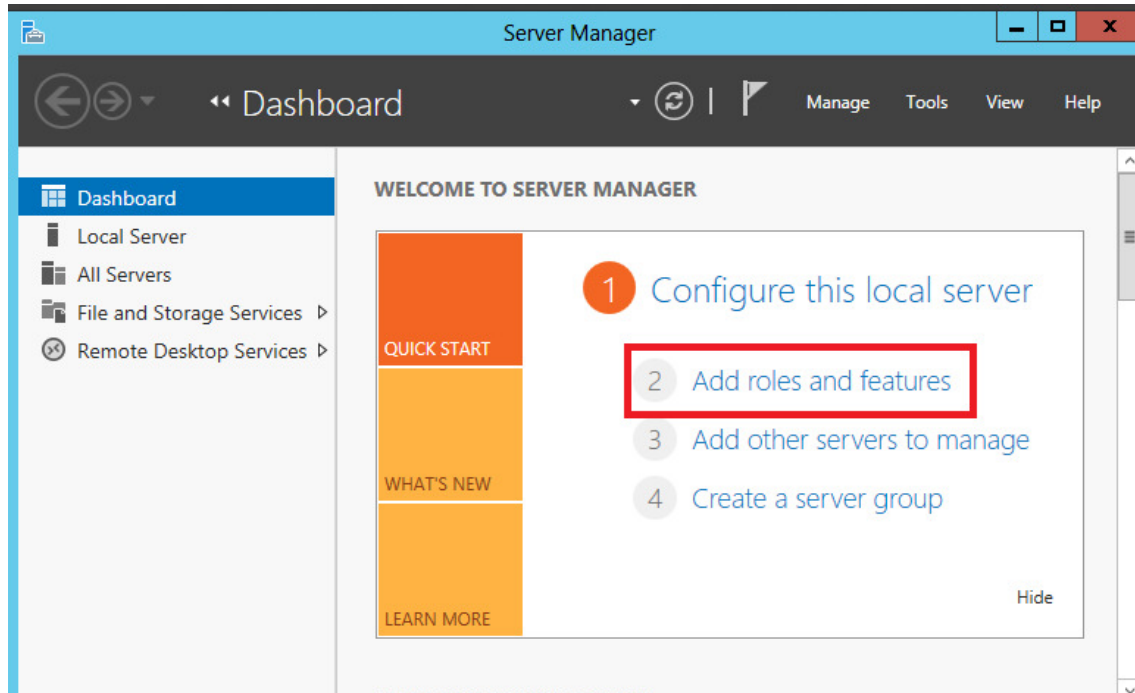
IIS is nu geïnstalleerd. Klik op 'Close' om de installatie te voltooien.

Controleer dat de webserver werkt door gebruik te maken van <http://localhost>



2.4 Windows Server 2012

De IIS setup voor windows Server 2012 is hetzelfde als bij Windows Server 2008 via de 'Server Manager'.



Add Roles and Features Wizard DESTINATION SERVER WS2012

Select installation type

Before You Begin
Installation Type
 Server Selection
 Server Roles
 Features
 Confirmation
 Results

Select the installation type. You can install roles and features on a running physical computer or virtual machine, or on an offline virtual hard disk (VHD).

- Role-based or feature-based installation**
 Configure a single server by adding roles, role services, and features.
- Remote Desktop Services installation**
 Install required role services for Virtual Desktop Infrastructure (VDI) to create a virtual machine-based or session-based desktop deployment.

< Previous **Next >** Install Cancel

Add Roles and Features Wizard DESTINATION SERVER WS2012

Select destination server

Before You Begin
 Installation Type
Server Selection
 Server Roles
 Features
 Confirmation
 Results

Select a server or a virtual hard disk on which to install roles and features.

- Select a server from the server pool
- Select a virtual hard disk

Server Pool

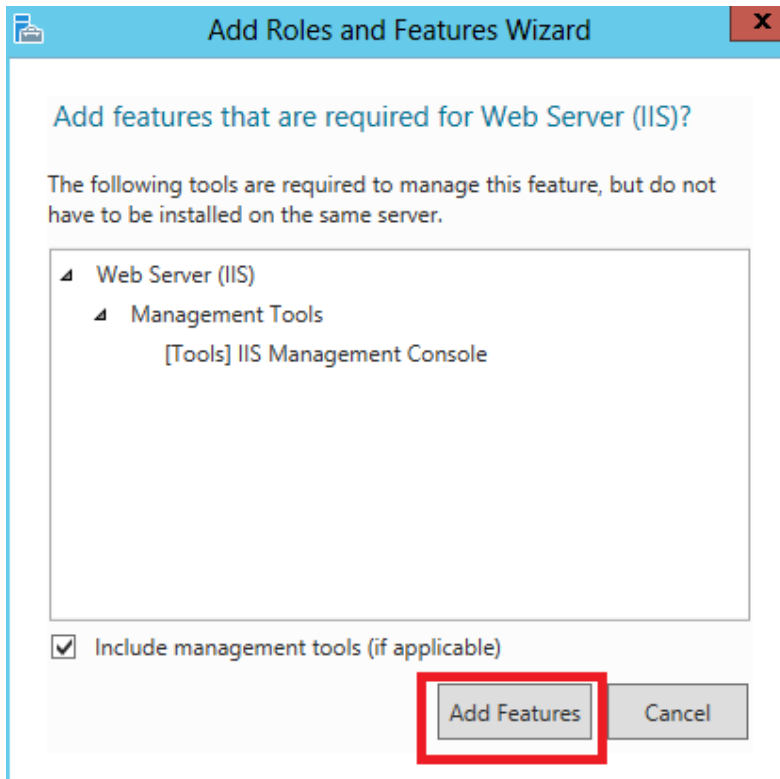
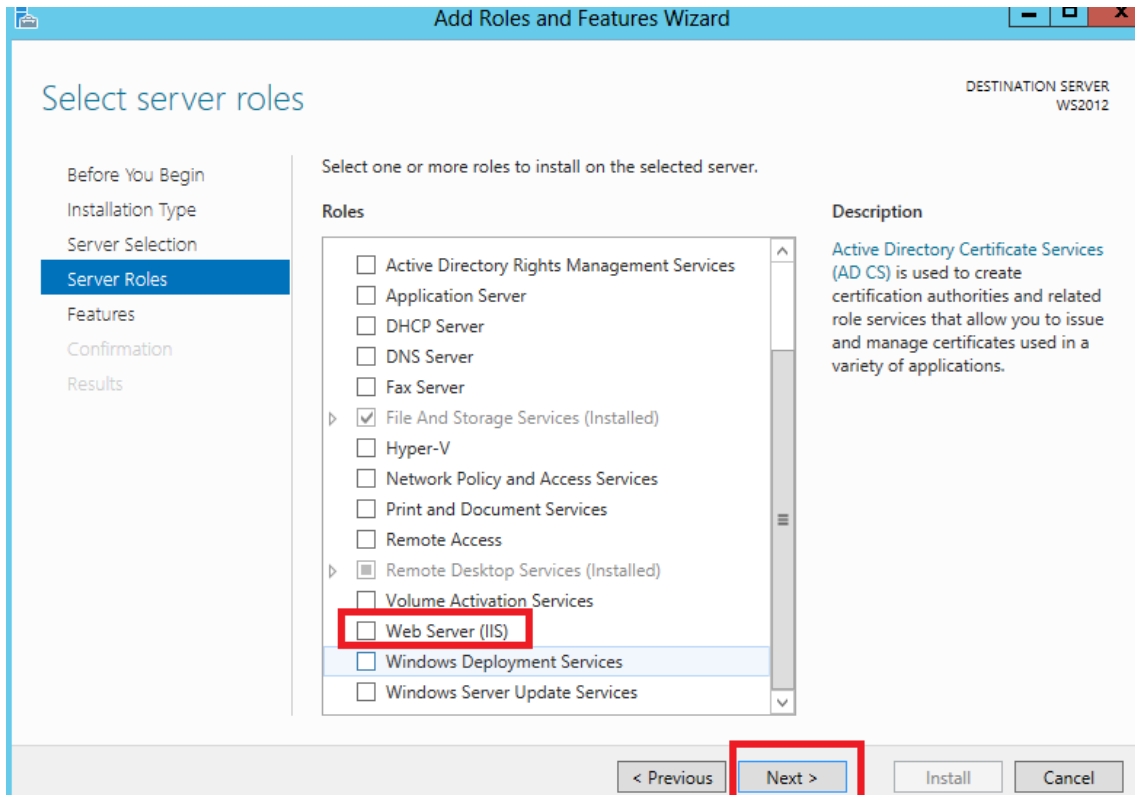
Filter:

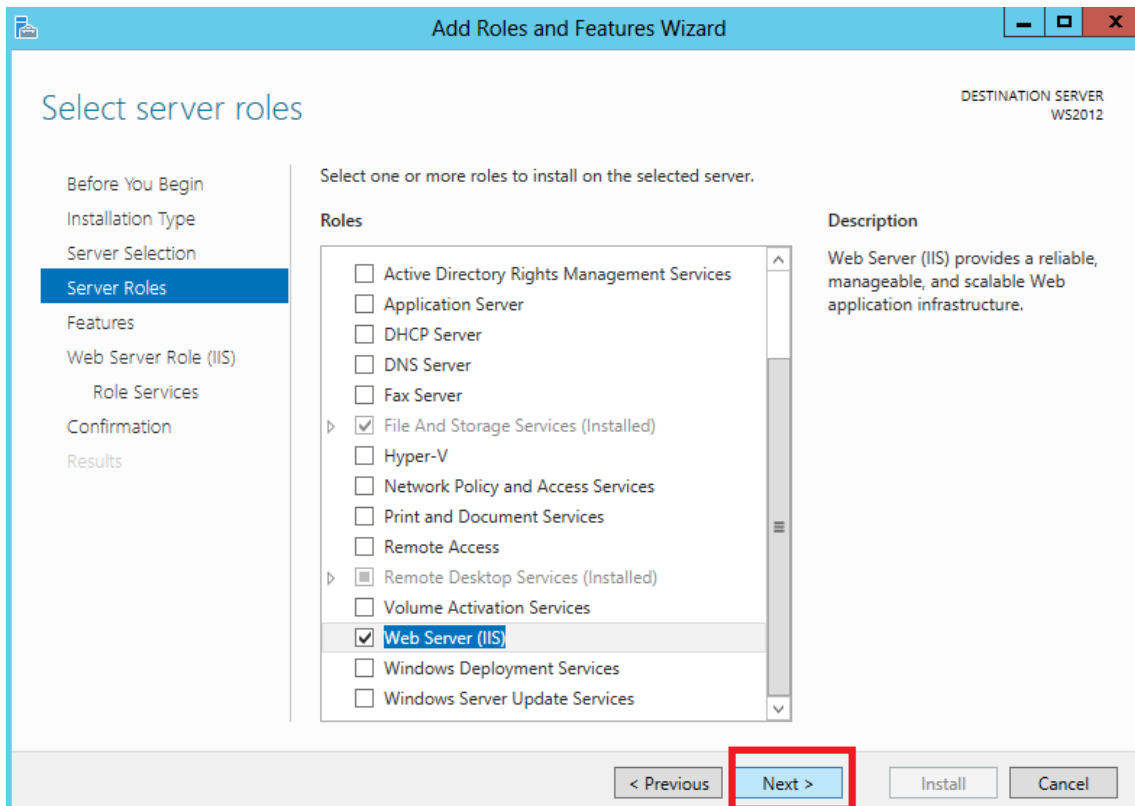
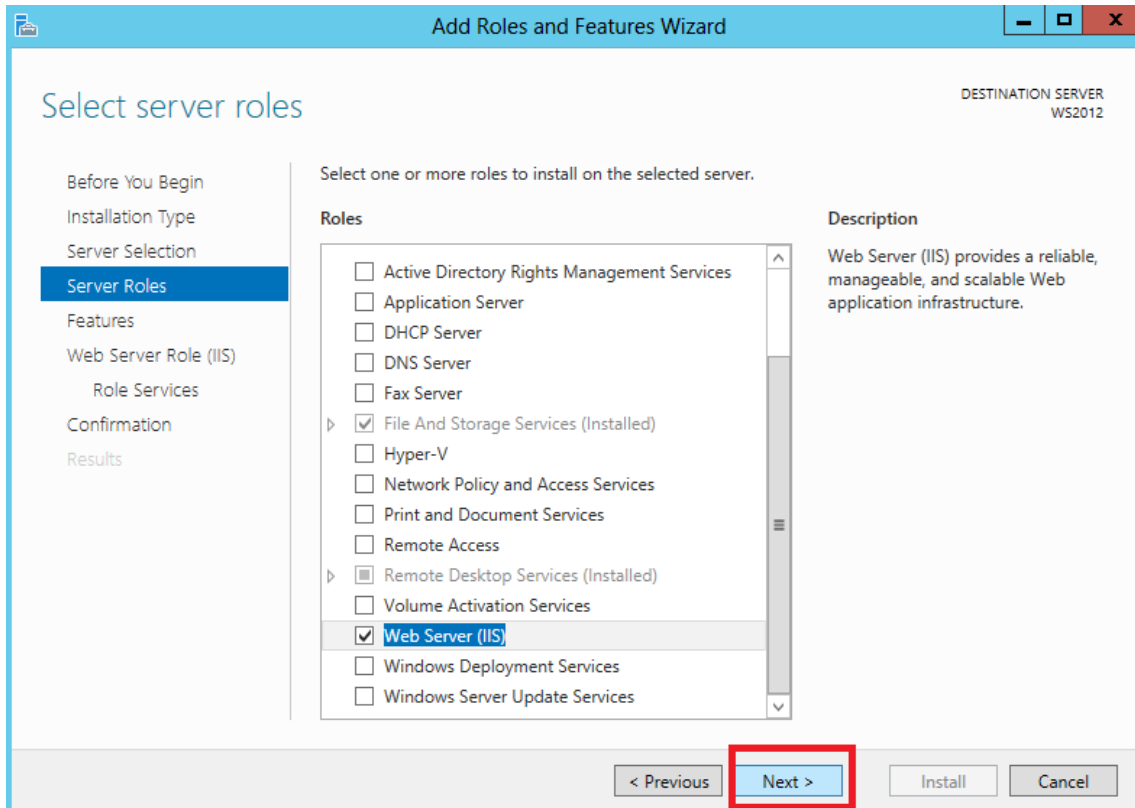
Name	IP Address	Operating System
WS2012	125.100.75.206	Microsoft Windows Server 2012 Standard

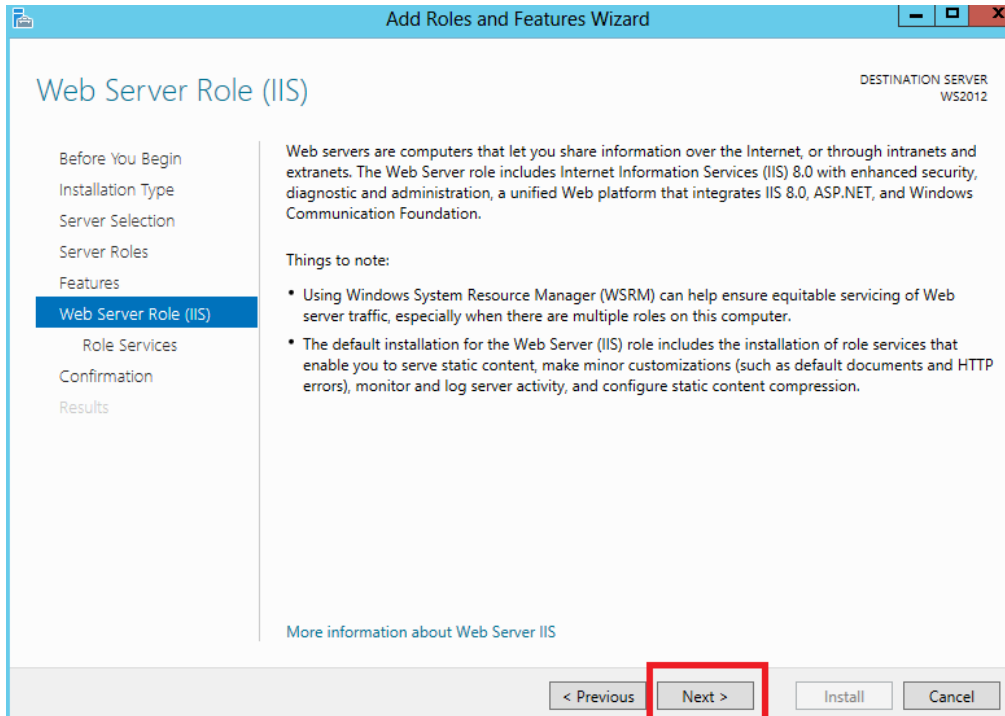
1 Computer(s) found

This page shows servers that are running Windows Server 2012, and that have been added by using the Add Servers command in Server Manager. Offline servers and newly-added servers from which data collection is still incomplete are not shown.

< Previous **Next >** Install Cancel







Select role services

SERVER NAME: WS2012

Before You Begin

Installation Type

Server Selection

Server Roles

Features

Web Server Role (IIS)

Role Services

Confirmation

Results

Select the role services to install for Web Server (IIS)

Role services	Description
<ul style="list-style-type: none"> ▲ <input checked="" type="checkbox"/> Web Server <ul style="list-style-type: none"> ▲ <input checked="" type="checkbox"/> Common HTTP Features <ul style="list-style-type: none"> <input checked="" type="checkbox"/> Default Document <input checked="" type="checkbox"/> Directory Browsing <input checked="" type="checkbox"/> HTTP Errors <input checked="" type="checkbox"/> Static Content <input checked="" type="checkbox"/> HTTP Redirection <input type="checkbox"/> WebDAV Publishing ▲ <input checked="" type="checkbox"/> Health and Diagnostics <ul style="list-style-type: none"> <input checked="" type="checkbox"/> HTTP Logging <input checked="" type="checkbox"/> Custom Logging <input checked="" type="checkbox"/> Logging Tools <input checked="" type="checkbox"/> ODBC Logging <input checked="" type="checkbox"/> Request Monitor <input checked="" type="checkbox"/> Tracing ▲ <input checked="" type="checkbox"/> Performance <ul style="list-style-type: none"> <input checked="" type="checkbox"/> Static Content Compression <input checked="" type="checkbox"/> Dynamic Content Compression ▲ <input checked="" type="checkbox"/> Security <ul style="list-style-type: none"> <input checked="" type="checkbox"/> Request Filtering <input checked="" type="checkbox"/> Basic Authentication <input type="checkbox"/> Centralized SSL Certificate Support <input checked="" type="checkbox"/> Client Certificate Mapping Authentication <input checked="" type="checkbox"/> Digest Authentication <input checked="" type="checkbox"/> IIS Client Certificate Mapping Authentication <input checked="" type="checkbox"/> IP and Domain Restrictions <input type="checkbox"/> URL Authorization <input type="checkbox"/> Windows Authentication ▲ <input checked="" type="checkbox"/> Application Development <ul style="list-style-type: none"> <input checked="" type="checkbox"/> .NET Extensibility 3.5 <input type="checkbox"/> ASP.NET 4.5 	<p>Management Service allows the Web server to be managed remotely from another computer using IIS Manager.</p>

< Previous
Next >
Install
Cancel

Before You Begin
 Installation Type
 Server Selection
 Server Roles
 Features
 Web Server Role (IIS)
Role Services
 Confirmation
 Results

Select the role services to install for Web Server (IIS)

Role services

- Security
 - Request Filtering
 - Basic Authentication
 - Centralized SSL Certificate Support
 - Client Certificate Mapping Authentication
 - Digest Authentication
 - IIS Client Certificate Mapping Authentication
 - IP and Domain Restrictions
 - URL Authorization
 - Windows Authentication
- Application Development
 - .NET Extensibility 3.5
 - .NET Extensibility 4.5
 - Application Initialization
 - ASP
 - ASP.NET 3.5
 - ASP.NET 4.5
 - CGI
 - ISAPI Extensions
 - ISAPI Filters
 - Server Side Includes
 - WebSocket Protocol
- FTP Server
 - FTP Service
 - FTP Extensibility
- IIS Hostable Web Core
- Management Tools
 - IIS Management Console
 - IIS 6 Management Compatibility
 - IIS Management Scripts and Tools
 - Management Service**

Description

Management Service allows the Web server to be managed remotely from another computer using IIS Manager.

< Previous **Next >** Install Cancel

Confirm installation selections

DESTINATION SERVER
WS2012

Before You Begin

Installation Type

Server Selection

Server Roles

Features

Web Server Role (IIS)

Role Services

Confirmation

Results

To install the following roles, role services, or features on selected server, click Install.

Restart the destination server automatically if required

Optional features (such as administration tools) might be displayed on this page because they have been selected automatically. If you do not want to install these optional features, click Previous to clear their check boxes.

- .NET Framework 4.5 Features
 - ASP.NET 4.5
- Web Server (IIS)
 - FTP Server
 - FTP Extensibility
 - FTP Service
 - Management Tools
 - IIS 6 Management Compatibility
 - IIS 6 Metabase Compatibility
 - IIS Management Console
 - Management Service
 - IIS Management Scripts and Tools
- Web Server
 - Application Development
 - ASP
 - ASP.NET 3.5
 - Server Side Includes
 - ISAPI Extensions
 - ISAPI Filters
 - .NET Extensibility 3.5
 - Common HTTP Features
 - Default Document
 - Directory Browsing
 - HTTP Errors
 - HTTP Redirection
 - Static Content

[Export configuration settings](#)
[Specify an alternate source path](#)

< Previous

Next >

Install

Cancel

Add Roles and Features Wizard

DESTINATION SERVER
WS2012

Installation progress

Before You Begin
Installation Type
Server Selection
Server Roles
Features
Web Server Role (IIS)
 Role Services
Confirmation
Results

View installation progress

i Feature installation
Installation succeeded on WS2012.

- .NET Framework 4.5 Features**
 - ASP.NET 4.5
- Web Server (IIS)**
 - FTP Server**
 - FTP Extensibility
 - FTP Service
 - Management Tools**
 - IIS 6 Management Compatibility
 - IIS 6 Metabase Compatibility
 - IIS Management Console
 - Management Service
 - IIS Management Scripts and Tools
 - Web Server**
 - Application Development
 - ASP
 - ASP.NET 3.5
 - Server Side Includes
 - ISAPI Extensions
 - ISAPI Filters
 - .NET Extensibility 3.5
 - Common HTTP Features
 - Default Document
 - Directory Browsing

i You can close this wizard without interrupting running tasks. View task progress or open this page again by clicking Notifications in the command bar, and then Task Details.

[Export configuration settings](#)

< Previous Next > **Close** Cancel

The screenshot shows the Server Manager Dashboard. At the top, there's a navigation bar with 'Server Manager' and 'Dashboard'. Below that, a 'WELCOME TO SERVER MANAGER' section contains a 'QUICK START' guide with four steps: 1. Configure this local server, 2. Add roles and features, 3. Add other servers to manage, and 4. Create a server group. Below this is a 'ROLES AND SERVER GROUPS' section. It shows five role cards: 'File and Storage Services', 'IIS', 'Remote Desktop Services', 'Local Server', and 'All Servers'. The 'IIS' card is highlighted with a red border. Each card lists sub-features like 'Manageability', 'Events', 'Services', 'Performance', and 'BPA results'. The 'Local Server' and 'All Servers' cards also show a 'Services' sub-item with a red '1' icon. The date '8/12/2014 4:55 PM' is visible at the bottom of the last two cards.

DESTINATION SERVER
WS2012

Installation progress

- Before You Begin
- Installation Type
- Server Selection
- Server Roles
- Features
- Web Server Role (IIS)
 - Role Services
- Confirmation
- Results

View installation progress

Feature installation

Installation started on WS2012

.NET Framework 4.5 Features

- ASP.NET 4.5

Web Server (IIS)

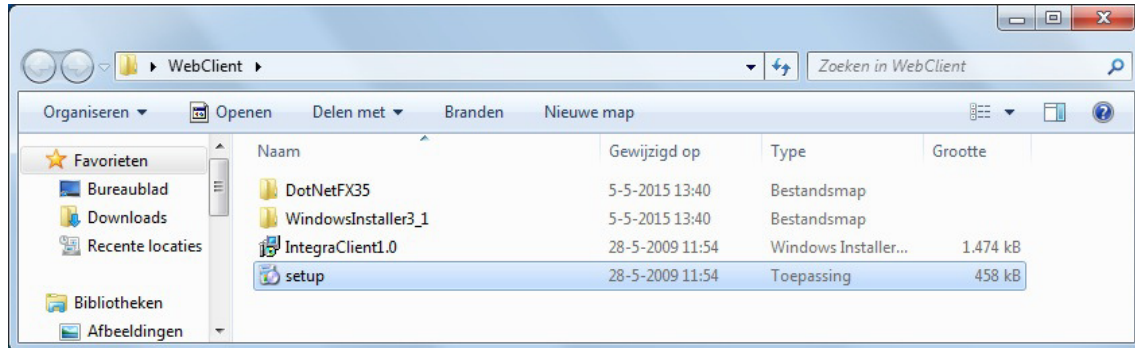
- FTP Server**
 - FTP Extensibility
 - FTP Service
- Management Tools**
 - IIS 6 Management Compatibility
 - IIS 6 Metabase Compatibility
 - IIS Management Console
 - Management Service
 - IIS Management Scripts and Tools
- Web Server**
 - Application Development**
 - ASP
 - ASP.NET 3.5
 - Server Side Includes
 - ISAPI Extensions
 - ISAPI Filters
 - .NET Extensibility 3.5
 - Common HTTP Features**
 - Default Document
 - Directory Browsing

Information You can close this wizard without interrupting running tasks. View task progress or open this page again by clicking Notifications in the command bar, and then Task Details.

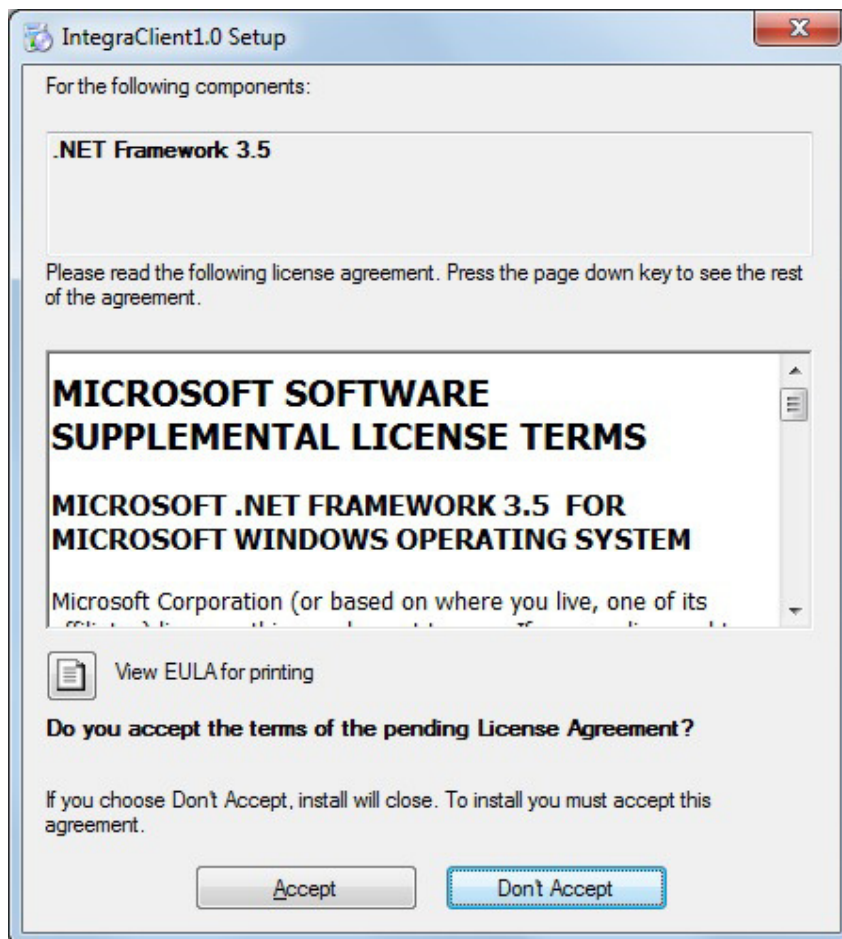
[Export configuration settings](#)

3 Installatie webclient

Nadat IIS is geïnstalleerd, kan de webclient geïnstalleerd worden. Ga naar de webclient folder op de cd.

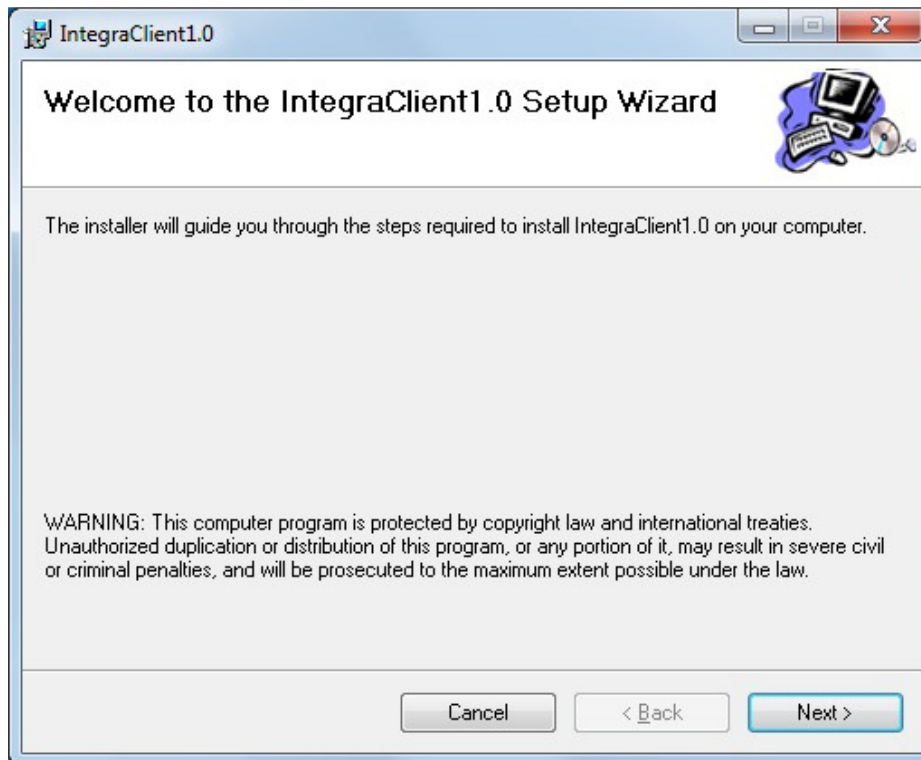


Klik met de rechter muisknop op het 'Setup' bestand en selecteer 'Als administrator uitvoeren'.

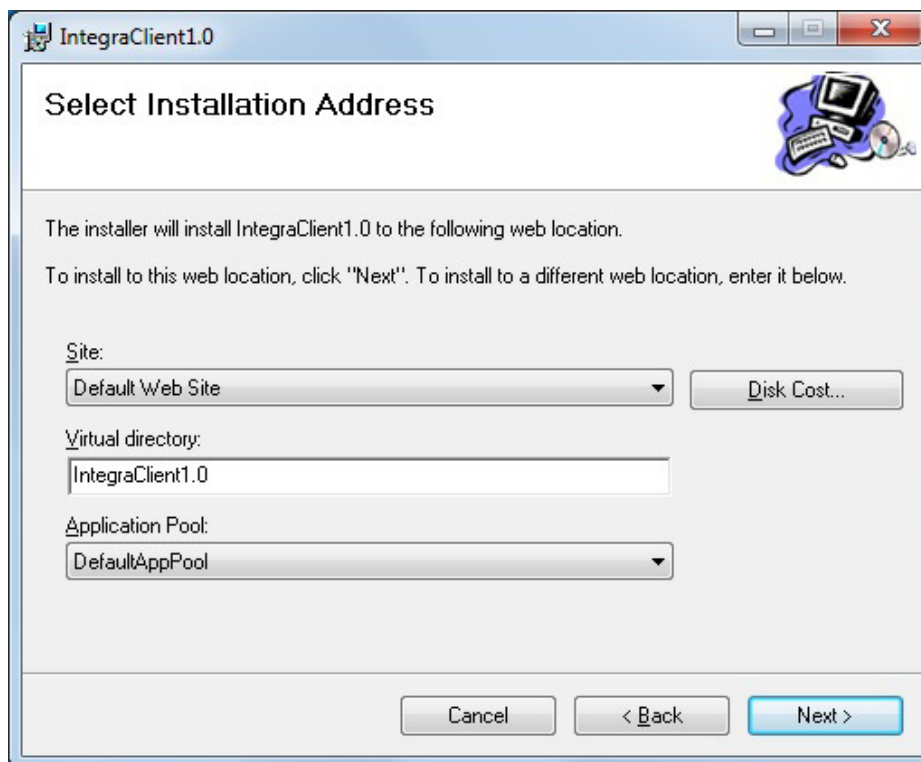


Bovenstaand scherm komt alleen tevoorschijn Wanneer .NET framework 3.5 niet op de PC geïnstalleerd is.

Klik op 'Accept'.

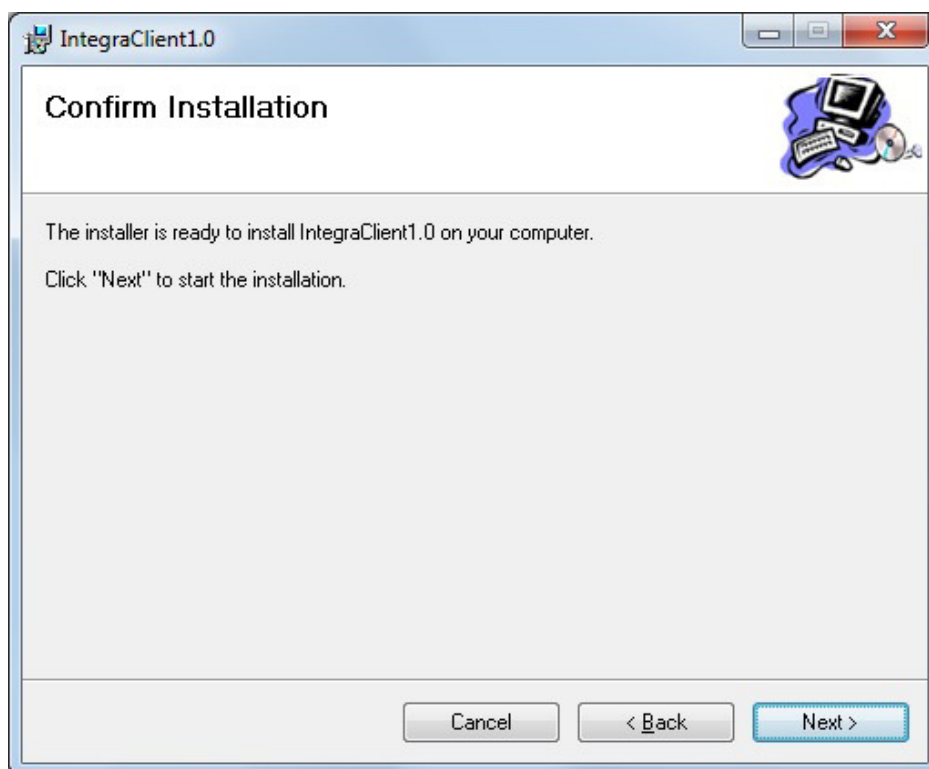


Klik op 'Next'

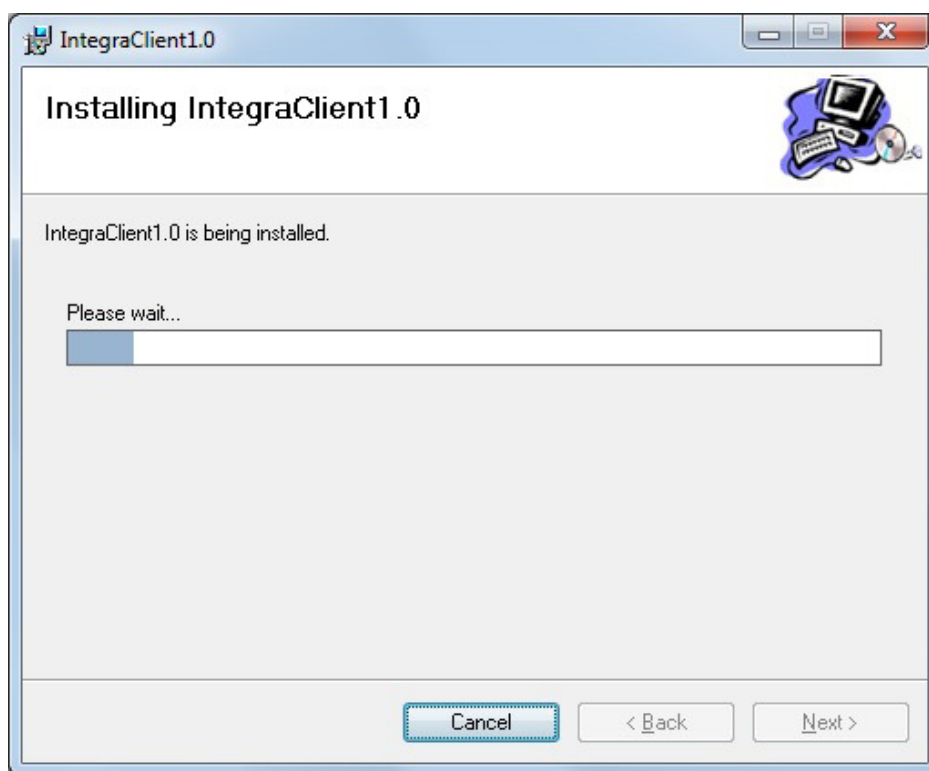


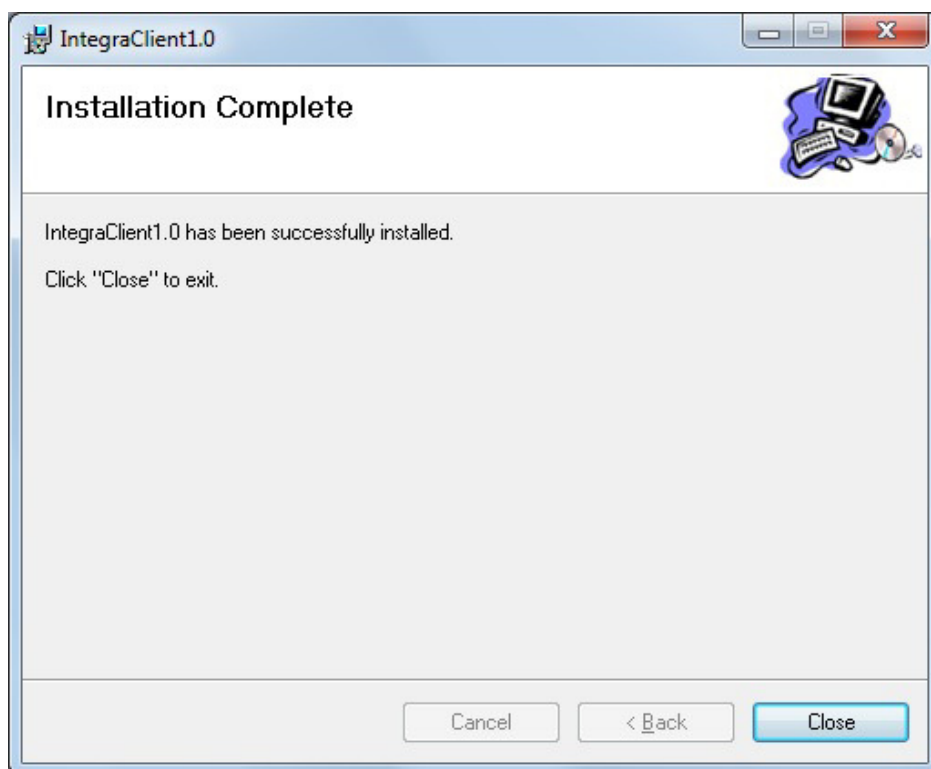
De 'Virtual directory' is de naam van de website die aangemaakt wordt.

Klik op 'Next'.



Klik op 'Next'.




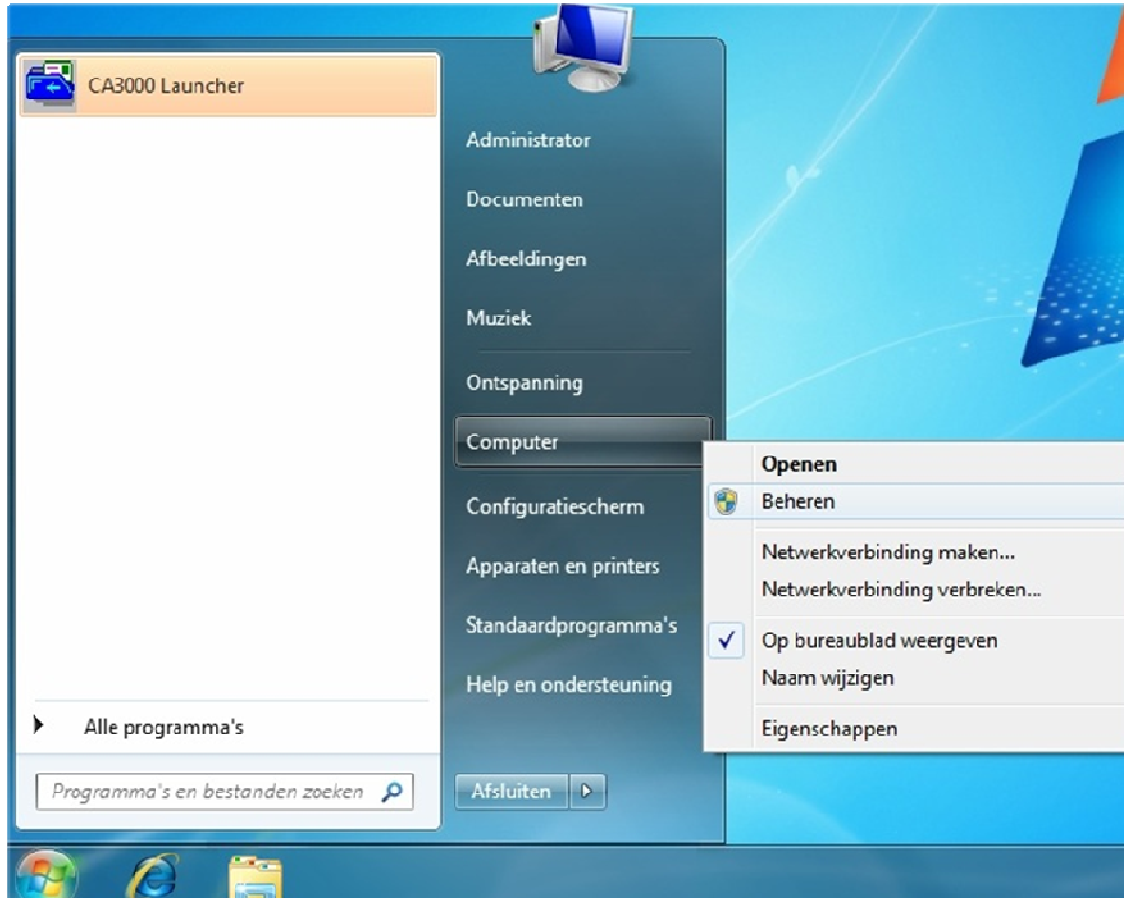


Klik op 'Close' om de installatie te voltooien.

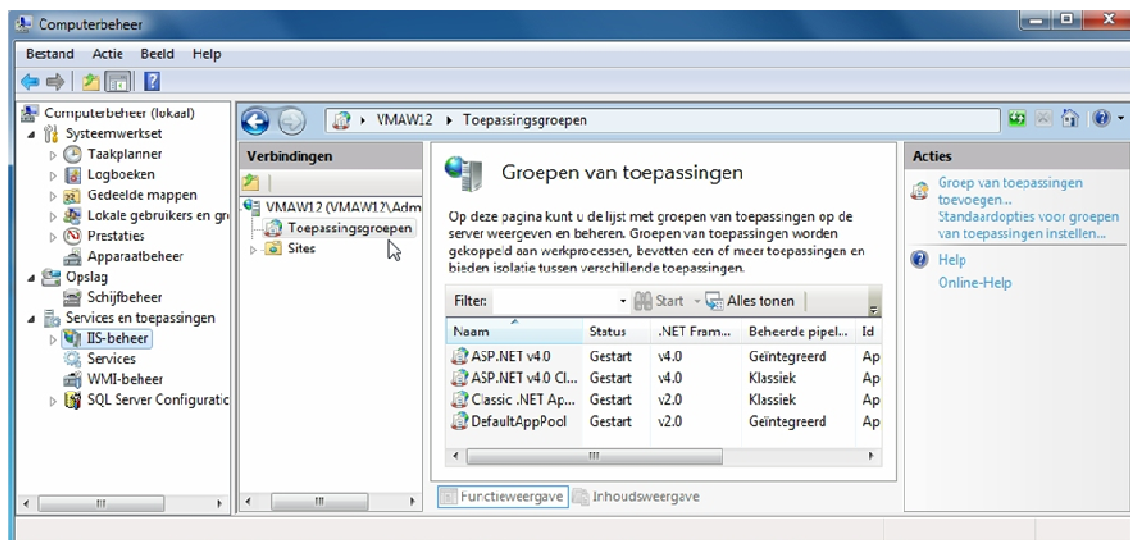
4 Instellingen na installatie webclient

4.1 Windows 7 (64bit)

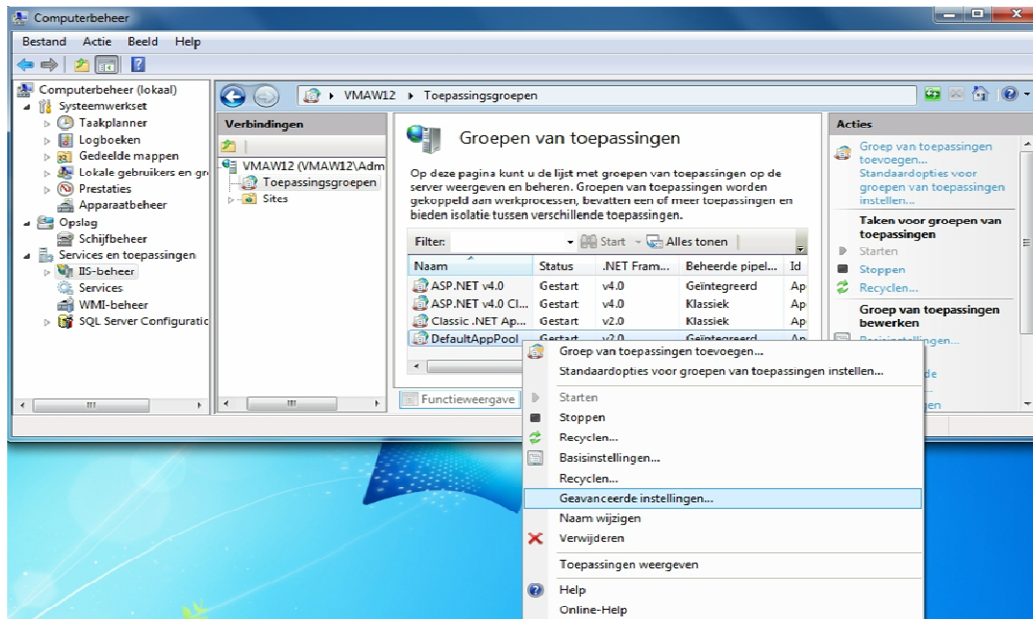
Klik op start () en vervolgens rechter muisknop op 'Computer'. Klik hier op 'Beheren'.



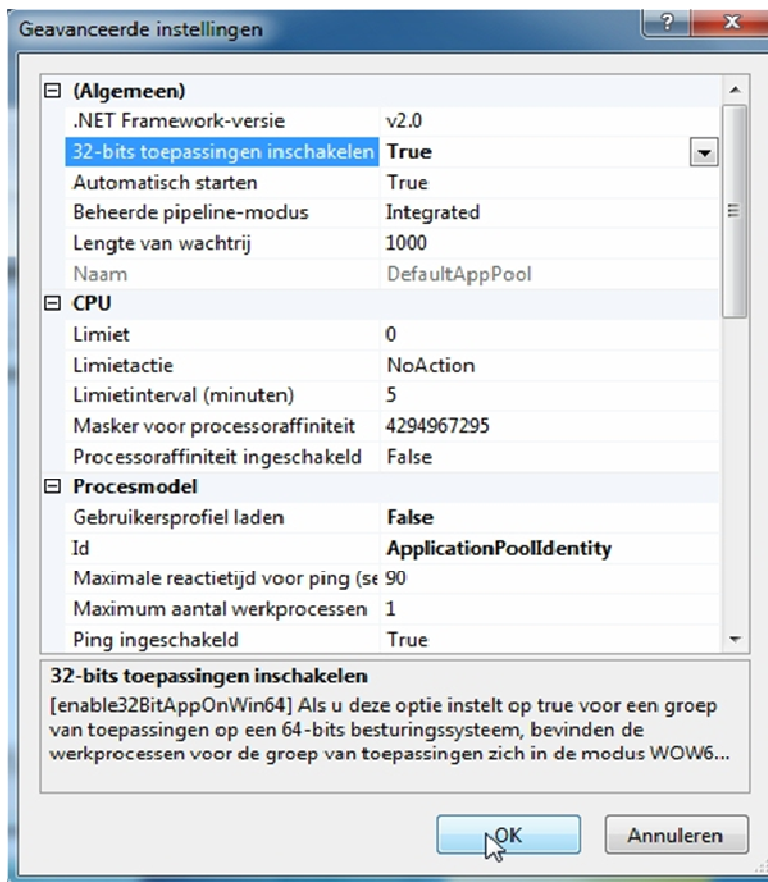
Klik links op 'IIS-beheer' en selecteer onder verbindingen 'Toepassingsgroepen'.



Klik met de rechter muisknop op 'DefaultAppPool' en klik op 'Geavanceerde instellingen'.

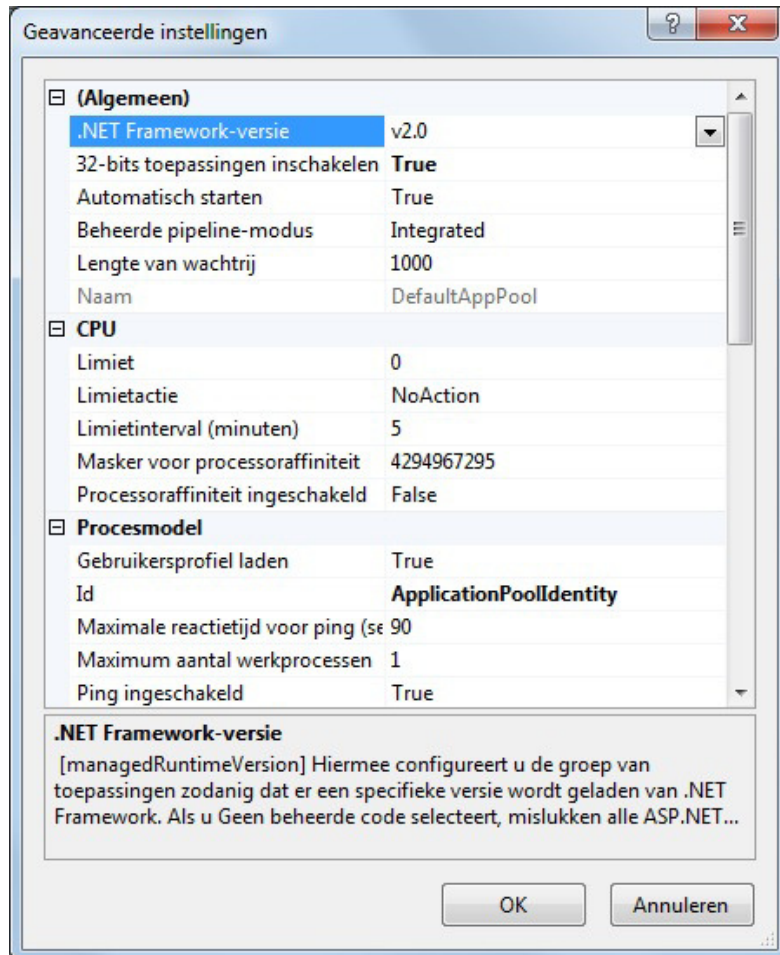


Wijzig in het volgende scherm de "32-bits toepassingen inschakelen" naar **True**.
Klik na het wijzigen op "OK".



4.2 Windows 8/8.1

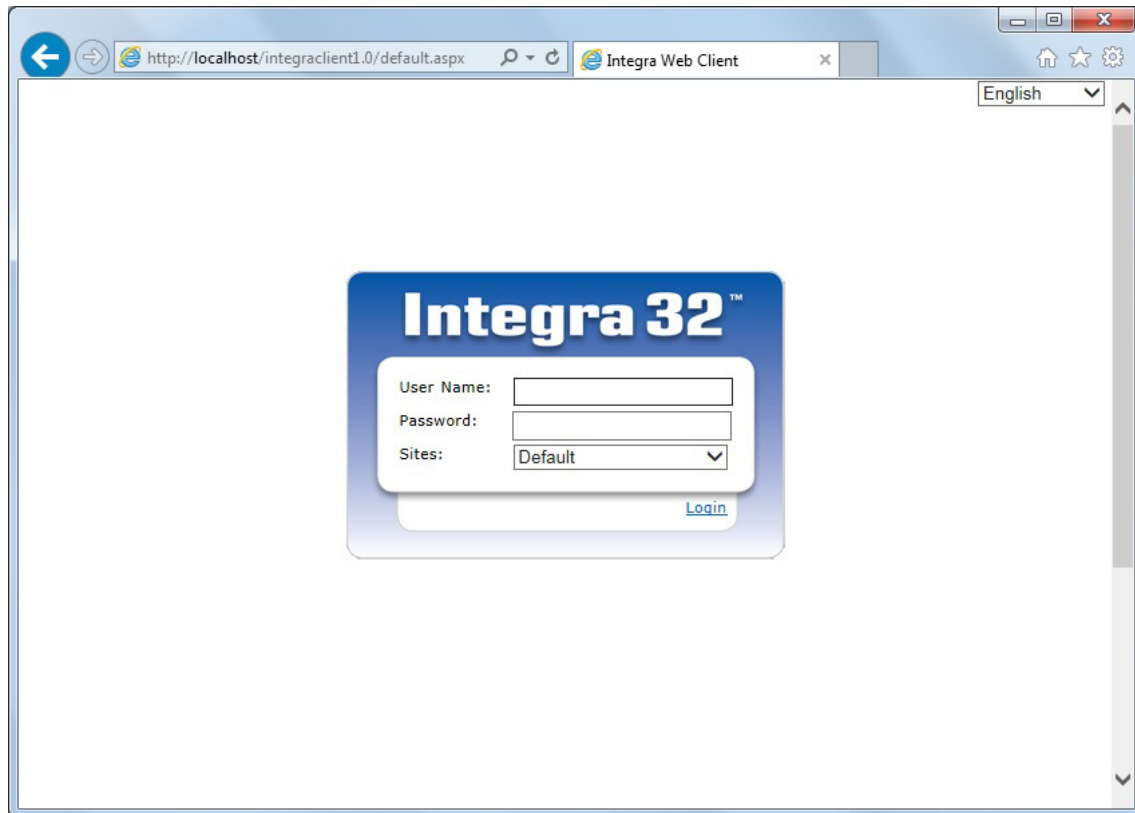
De instellingen voor windows 8/8.1 zijn gelijk aan die van windows 7 (64bit). Controleer dat de instelling '.NET Framework-versie' ingesteld staat op 'v2.0'.



5 Inloggen via de Webclient

Open de Microsoft Internet Explorer en voer het adres van de AxiomLite server in.

<http://localhost/IntegraClient1.0/default.aspx>



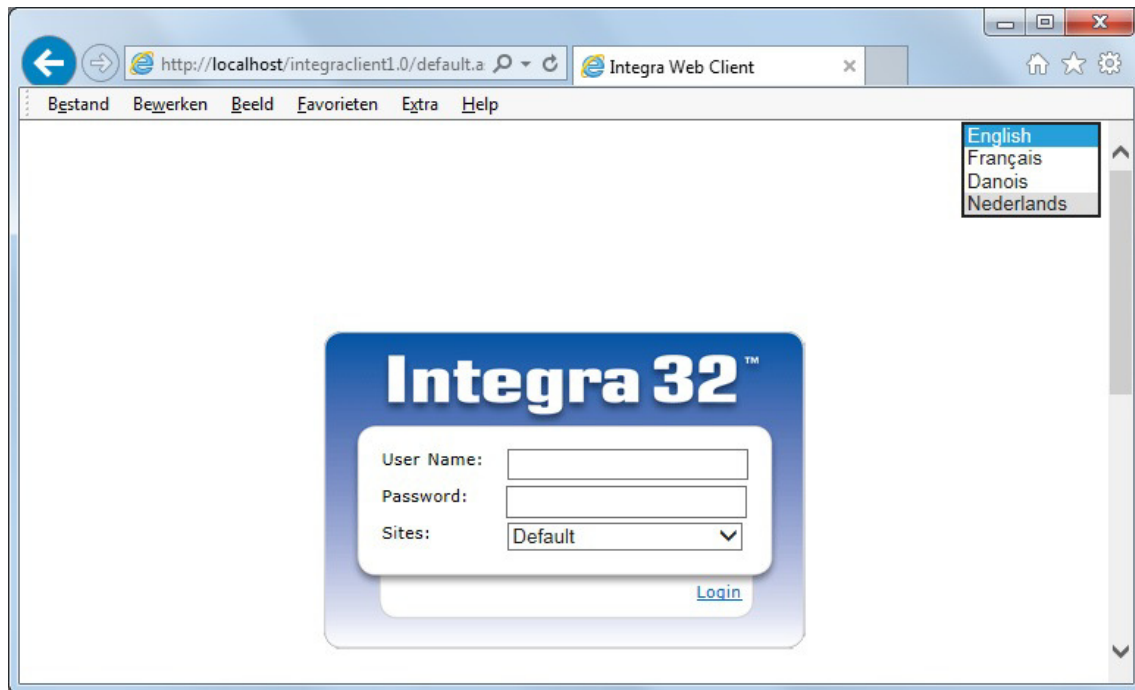
Om een verbinding te maken via het netwerk, vul dan het ipadres in van de AxiomLite server.

[http://\(IPadres AxiomLite server\)/IntegraClient1.0/default.aspx](http://(IPadres AxiomLite server)/IntegraClient1.0/default.aspx)

[http://\(Naam AxiomLite server\)/IntegraClient1.0/default.aspx](http://(Naam AxiomLite server)/IntegraClient1.0/default.aspx)

Voor lokaal testen kan 'localhost' of 127.0.0.1 gebruikt worden.

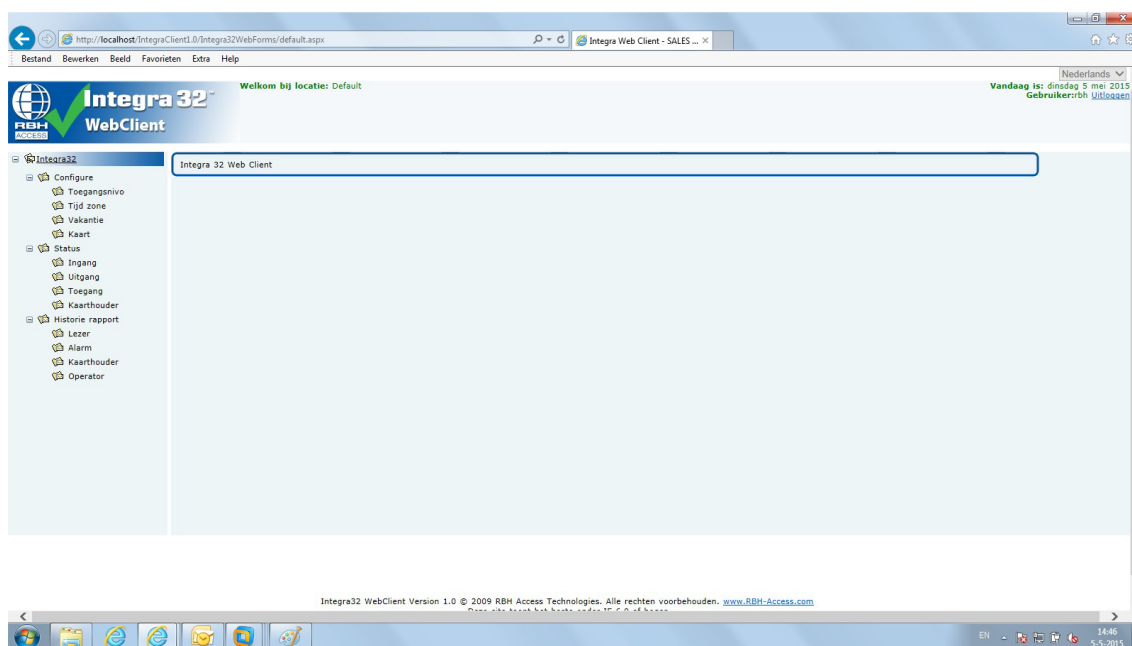
5.1 Taal selecteren



Selecteer de taal. Standaard is de taal 'English' geselecteerd.



Voer de Login naam en Wachtwoord in en klik op 'Log in'



Opmerking:

Controleer dat IIS web services en de Integra Server en Client applicatie niet worden geblokkeerd door een firewall.