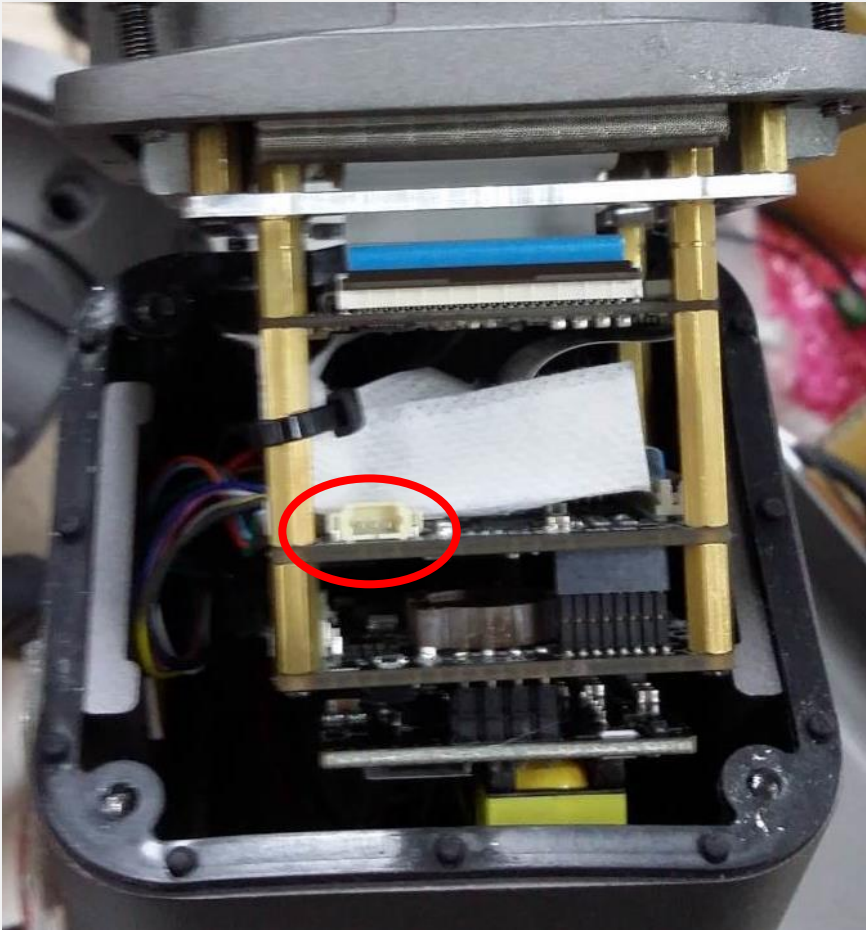
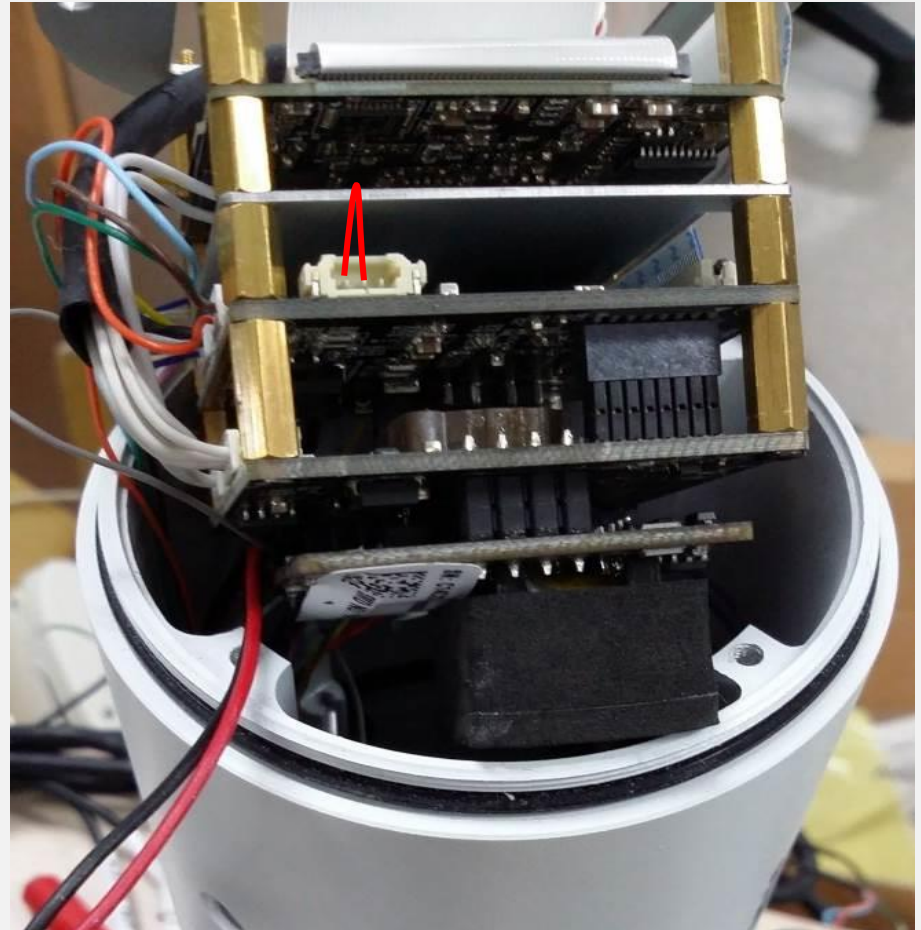


## ■ How to do factory reset

- 1) Check if a camera has 0.25mm pitch 3pin connector on PWR#2 Board

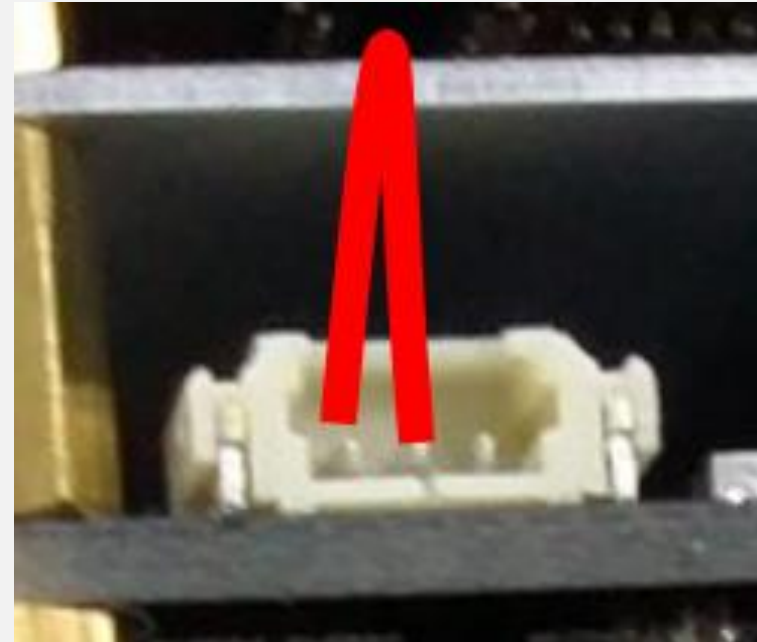


- 2) Touch the first and second pins with a metal pincette like the picture shows.



# ■ How to do factory reset

※ Closer Look



- 3) Power the camera holding the pincette touching the two pins.
- 4) After around 5 seconds, detach the pincette.
- 5) Check if the camera is reset.